

8804D/A/AD

INSTALLATION MANUAL

Intelligent Electronic Sensor Faucet

► Please read the instruction before installation and retain it well for future reference

INSTALLATION MANUAL

Intelligent Electronic Sensor Faucet



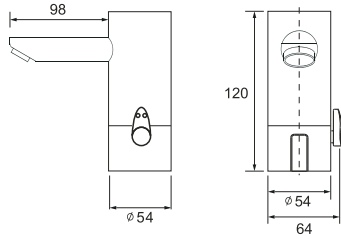
Intelligent faucet ----Water flows intelligently

The intelligent faucet is made with infrared sensor and MCU. All working parts are included in the faucet spout which is above on the basin. It is easily to be installed and maintained. User can adjust water temperature by the handle on the integrated faucet. It is applicable in hotel, office building, and public establishment.

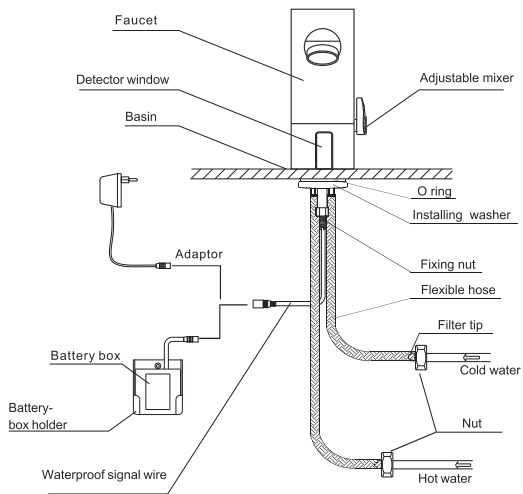
Technical Parameters:

Style	A	D	AD
Power Supply	100-240V 50/60Hz	DC6V	100-240V 50/60Hz&DC6V
Water Pressure	0.05MPa-0.7MPa		
Water Temperature	1-50℃		
Environment Temperature	1-45℃		
Water Supplying caliber	G1/2		
Water Flow	5-8L/min		

Overall dimensions



Installation



Picture 1B

Before installation

Please install bleed parts before installing the intelligent faucet.(see picture 1B)

- Basin/face Basin
- Drainpipe
- Inlet pipe for hot water and cold water

Important reminder:

- All drainpipes installation must be in line with concerned standard and criterion.
- Must clean the pipe before connecting.

Before install the faucet on basin, please be sure the center installing hole is big enough for fixing. The minimum diameter of the hole shall be 1-3/16"(30mm). If the thickness of basin is over than 1/2"(13mm), then a 1-7/32"(31mm) diameter hole is demanded.

Fixing tools:

- 13mm open spanner for tie-in of flexible hose.
- 13mm open spanner or nut spanner for fixing nut.
- 3/4" open spanner for nut side of flexible hose.

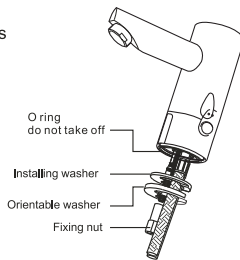
Installing faucet

Step 1

Take off all fixing parts

- Fixing nut
- Orientable washer
- Installing washer

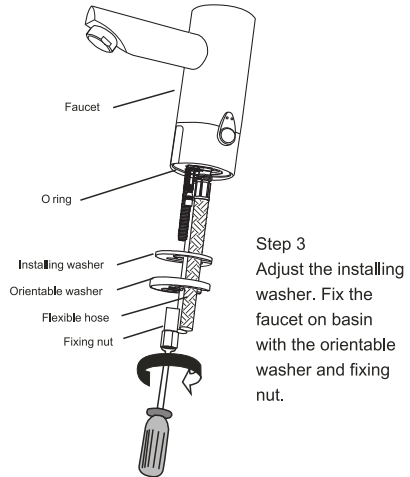
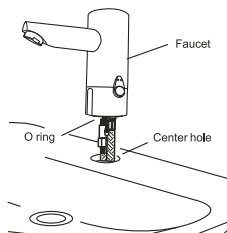
Please do not take off the O ring from the faucet bottom.



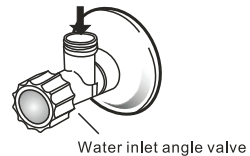
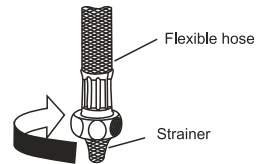
Step 2

Put the faucet (with O ring) on the center fixing hole {minimum dia. 1-3/16"(30mm)}

Note: If install the faucet on a basin with 3 holes, please use deck plate.



Step 3
Adjust the installing washer. Fix the faucet on basin with the orientable washer and fixing nut.



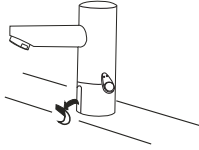
Step 4

Before connecting the flexible hose with the water inlet, must clean the pipe.

Make sure the strainer is in right place, screw down the flexible hose.

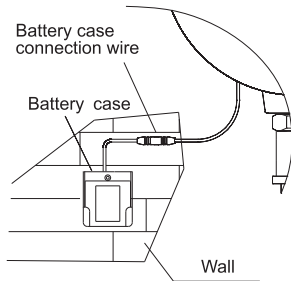
Step 5

Take off the protecting cover on sensor.



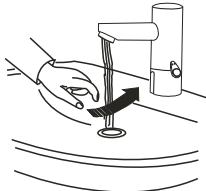
Step 6

Take away the cover of adhesive sticker, paste the battery case holder to the clean wall. Put the battery case into the holder and connect the connection wire.



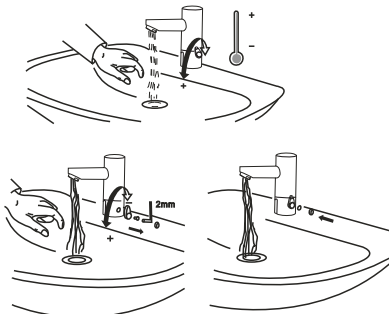
Step 7

Start the faucet, check if there is water leaking. If want to adjust the induce distance, please see the item of "Adjusting induce distance"



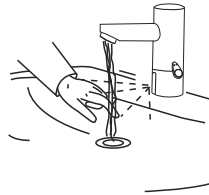
Step 8

Set water temperature. Adjust the mixer handle to a suitable place, take off the handle and cover the small hole with decorating cover.

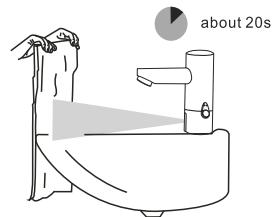


Operation

When put hand into the infrared induce range (under the faucet aerator), the infrared be reflected to sensor receiver, it opens the solenoid valve and water comes out automatically. Water stops when draw back hand or the flowing time to be the maximum as set.



Adjust induce distance



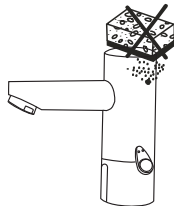
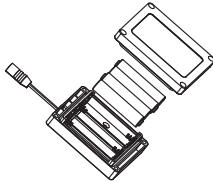
- 1.) Indicator blink 3-5seconds when sensor is energized. Then the sensor be in autoregulation : Sensor adjust the distance automatically when it feels the reverberation. (this process need 2 seconds).When the indicator turns off the faucet come into the work condition. You can adjust the sensor distance according to your requirement.
- 2.) Our common set distance in 16cm.If you need to adjust the distance please put the reverberation before the distance you need .Turn on the power and the product adjust automatically .After 20 seconds the distance can be set.

Strainer clean

Please close water inlet valve, screw off the hose from inlet connection and take off the strainer, then cleaning strainer with water and soft brush, install items according former step.

Battery replacement

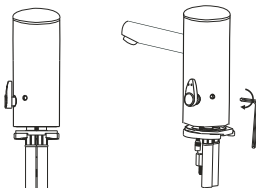
- The indicator light flicker 3 times in 1s automatically when battery's life end and the faucet stop work.
- Please change batteries in time when indicator flickers.
- Select 4pcs "AA" alkaline batteries when change batteries, the new and old can not be used together.
- Screw off the setscrews on battery-box.
- Put new batteries into the battery-box according to "+" and "-" direction.
- Close the battery-box with cover and fixed with screws.



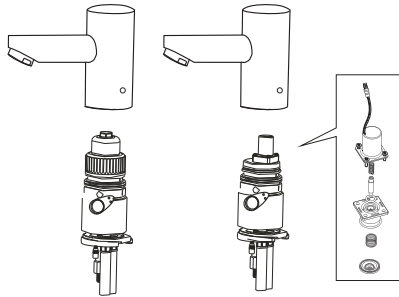
How to clean the faucet surface

The sandpaper or chemical reagent and not allowed to be used. Only soap and water are allowed to clean the faucet, then dry it with clean and soft towel. When clean the ceramic tiles in bathroom, please be careful the scour. All acid containing liquid will decrease luster on the faucet surface, or damage the chromed layer.

Solenoid valve clean:



Step1:
Close the angle valve, loose the screw with spanner and take off the faucet cover.



Step2:
Take off the valve head with "+" shape screw driver, take out the diaphragm and diaphragm bracket, then clean the small hole in diaphragm bracket with a small pin and flowing water.

Step3:
Install items according to the former step.

Trouble shooting

1. Phenomena: Water comes out no stopping.
Possibility: the sensor be induced by the basin or other objects.

Solution: Adjust the induce distance shorter.

2. Phenomena: sensor is working, but no water comes out.

Signal: the solenoid valve gives sound of open and close.

Possibility: low power battery.

Solution: change battery.

3. Phenomena: Water flows very slowly

Possibility: the inlet angle valve does not open completely.

Solution: Open the angle valve completely.

Possibility: the strainer in angle valve was blocked by dirt.

Solution: take off the strainer and clean it. If in need, change the strainer.

Possibility: the foam aerator was blocked by dirt.

Solution: take out the aerator and clean it. If in need, change the aerator.

Possibility: faucet gets fault.

Please call the distributor at your local place.

4. Phenomena: water flows no stopping or it still leaking after user leaving.
Possibility: faucet gets fault.
Please call the distributor at your local place.

5. Phenomena: the indicator always blink when the faucet is working.
Possibility: low power battery.
Solution: change battery.

6. Phenomena: water temperature is too hot or too cold.
Possibility: the angle valve was adjusted not fitable.
Solution: adjust the angle valve.
Possibility: the faucet mixer was set not fitable.
Solution: reduce the water temperature by running the mixer handle in clockwise, and increase the water temperature by running the mixer handle in counter-clockwise.
If need further information, please call your local distributor.

Caution:

1. To avoid trouble shooting, please don't tap the product as it had been installed with precision electronic components and solenoid valve.

2. To avoid the product surface or corrosion inner electronic component being damaged. Please use soft cloth with neutral liquid to clean its surface, then use damp cloth to wipe off wash liquid and then make it dry with soft cloth. Don't use water to rush it or use soap detergent, which includes massive power, or something have high acidity, alkalinity or nylon brush etc. Especially note that don't damage detector cover of sensor window to avoid the sensitivity being reduced.

Quality Guarantee

Please contact local retailer for the detailed quality guarantee.



UK Address

FW3 Limited
Unit 3 Woodlands Business Park
Burllescombe
Devon
EX16 7LL
United Kingdom

EU Address

FW3 Brands Ireland Limited HSOC
Financial & Business Advisors
Adelaide House
90 Upper George Street
Dun Laghaire
Co. Dublin
A96 R8R9
Ireland